



**Karolinska
Institutet**

Karolinska Institutet

<http://openarchive.ki.se>

This is a Peer Reviewed Published version of the following article, accepted for publication in BMC Nephrology.

2021-03-05

Copeptin is independently associated with vascular calcification in chronic kidney disease stage 5

Golembiewska, Edyta; Qureshi, Abdul Rashid; Dai, Lu; Lindholm, Bengt; Heimbürger, Olof; Söderberg, Magnus; Brismar, Torkel B; Ripsweden, Jonaz; Barany, Peter; Johnson, Richard J; Stenvinkel, Peter

BMC Nephrol. 2020 Feb 7;21(1):43.

BioMed Central

<http://doi.org/10.1186/s12882-020-1710-6>

<http://hdl.handle.net/10616/47550>

If not otherwise stated by the Publisher's Terms and conditions, the manuscript is deposited under the terms of the Creative Commons Attribution-NonCommercial-NoDerivatives License (<http://creativecommons.org/licenses/by-nc-nd/4.0/>), which permits non-commercial re-use, distribution, and reproduction in any medium, provided the original work is properly cited, and is not altered, transformed, or built upon in any way.

RESEARCH ARTICLE

Open Access



Copeptin is independently associated with vascular calcification in chronic kidney disease stage 5

Edyta Golembiewska^{1,2*} , Abdul Rashid Qureshi¹, Lu Dai¹, Bengt Lindholm¹, Olof Heimbürger¹, Magnus Söderberg³, Torkel B. Brismar⁴, Jonaz Ripsweden⁴, Peter Barany¹, Richard J. Johnson⁵ and Peter Stenvinkel¹

Abstract

Background: Vascular calcification (VC) is an independent predictor of cardiovascular disease (CVD) present in 30–70% of patients with chronic kidney disease (CKD). Copeptin is a sensitive surrogate marker of arginine vasopressin (AVP), which is involved in many pathophysiologic processes in CKD. The aim of the present study was to explore the association of copeptin with VC in CKD stage 5.

Methods: Copeptin was investigated in conjunction with living donor kidney transplantation in 149 clinically stable CKD stage 5 patients (CKD5), including 53 non-dialyzed (CKD5-ND) and 96 dialysis patients treated by peritoneal dialysis (PD) ($n = 43$) or hemodialysis (HD) ($n = 53$). We analyzed the association of copeptin with presence and extent of VC ascertained both histologically in biopsies from the inferior epigastric artery ($n = 137$) and by coronary artery calcification (CAC) score measured by computed tomography.

Results: Patients with higher copeptin were older, had higher systolic blood pressure, higher prevalence of CVD and their preceding time on chronic dialysis was longer. In Spearman's rank correlations (Rho), copeptin concentrations were significantly associated with CAC score (Rho = 0.27; $p = 0.003$) and presence of medial VC (Rho = 0.21; $p = 0.016$). Multivariate logistic regression analysis showed that 1-SD higher age, male gender, diabetes and 1-SD higher copeptin were significantly associated with the presence of moderate-extensive VC.

Conclusions: High circulating levels of copeptin in CKD5 patients are independently associated with the degree of medial calcification ascertained by histology of arterial biopsies. Thus, plasma copeptin may serve as a marker of the uremic calcification process.

Keywords: Copeptin, Chronic kidney disease, End-stage renal disease, Vascular calcification

Background

Chronic kidney disease (CKD) is associated with markedly increased morbidity and mortality which is mainly a result of premature cardiovascular disease (CVD) [1–3]. The causes for the high prevalence of CVD are still not fully elucidated and cannot be explained only by traditional Framingham risk factors, such as age, hypertension, diabetes

mellitus, dyslipidemia and smoking. In addition, CKD-specific risk factors, e.g. inflammation, prooxidant-antioxidant imbalance, protein-energy wasting, disorders in mineral metabolism and gut dysbiosis, also play a role [2, 4].

Medial vascular calcification (VC), i.e. calcific arteriosclerosis, an independent predictor of CVD, is reported in 30–70% of adult CKD patients, and ≈15% of pediatric CKD patients [5, 6]. VC develops in the intima together with atherosclerosis, which is defined as an increase in the deposition of plaques, and in the media together with arteriosclerosis, which is associated with vascular stiffening resulting from the loss of elasticity of muscle layer of the arterial wall. The presence of VC results in arterial dysfunction, such as NO-dependent endothelial

* Correspondence: iry@pum.edu.pl

¹Division of Renal Medicine and Baxter Novum, Department of Clinical Science, Intervention and Technology, Karolinska Institutet, Campus Flemingsberg, Stockholm, Sweden

²Department of Nephrology, Transplantology and Internal Medicine, Pomeranian Medical University, Al. Powstancow Wlkp. 72, 70-111 Szczecin, Poland

Full list of author information is available at the end of the article



dysfunction [7]. The extent of coronary artery calcification (CAC) examined by cardiac computed tomography (CT) is a useful tool in assessing extent of intima and medial VC [8, 9]. Medial calcification is predominantly related to abnormal metabolism in CKD and represents one of the uremic features entitled CKD – mineral and bone disorder (CKD-MBD) [10]. Although several biomarkers, such as calcium, phosphate, alkaline phosphatase, parathyroid hormone, fibroblast growth factor-23 (FGF-23), Klotho, vitamin D₃, osteoprotegerin (OPG) and sclerostin, play important roles in pathological pathways of CKD-MBD [11–13], the exact pathogenic mechanisms remain unclear and additional factors are likely to be involved.

Recently, there is increased attention to the role of the arginine vasopressin (AVP) system, particularly AVP and copeptin, in the pathophysiological mechanisms of CKD. AVP, known also as antidiuretic hormone, is produced in the hypothalamus in the form of a precursor, preproAVP, and released from the posterior pituitary gland in response to different osmotic and non-osmotic forces. The principal role of AVP is the control of fluid balance by promoting water preservation by the kidney, but, in addition, AVP is involved in the mediation of arteriolar vasoconstriction and contributes to cardiovascular stability [14]. Copeptin, a 39-amino acid glycopeptide with a leucine-rich core segment and molecular mass of 5 kDa is derived from the C-terminal portion of the preprovasopressin and is co-released with AVP in equimolar amounts. Copeptin is thought to be a reliable, sensitive and easy to measure surrogate marker of AVP [15]. This observation has prompted extensive research regarding copeptin – as a surrogate measure of AVP – in numerous clinical situations. High circulating copeptin is associated with decline in glomerular filtration rate and a greater risk of new-onset CKD [16, 17]. Moreover, high copeptin has been linked with increased risk of myocardial infarction, heart failure, hypertension, ischemic stroke, diabetes mellitus and metabolic syndrome [14, 18]. In patients with type 1 diabetes, elevated copeptin levels were strongly related to diabetic CKD and coronary atherosclerosis [19].

The aim of the present study was to examine the association of copeptin with the presence and extent of CAC (by CT) and medial VC ascertained in biopsies from the inferior epigastric artery in CKD5 patients at the time of living donor kidney transplantation (LD-Rtx).

Methods

Patients and study design

Circulating concentrations of copeptin were measured in clinically stable CKD 5 patients ($n = 149$) comprising non-dialyzed patients (CKD5-ND; $n = 53$), and dialysis patients ($n = 96$) treated by peritoneal dialysis (PD; $n =$

43) or hemodialysis (HD; $n = 53$) recruited from an ongoing study on vascular changes before undergoing LD-Rtx [13]. Their age ranged between 19 and 75 years, 101 (68%) were men, 16 (11%) had diabetes mellitus and 23 (15%) had previously been diagnosed with cerebrovascular, cardiovascular, and/or peripheral vascular disease (grouped as CVD).

The characteristics of patients, according to tertiles of copeptin, are shown in Table 1. Patients were recruited from March 2009 to February 2017. Exclusion criterion was unwillingness to participate. Informed consent to participate in the study – including consent to biopsy of inferior epigastric artery during transplantation procedure – was obtained from each patient. The Ethics Committee of the Karolinska Institutet (EPN) approved study protocols. The studies were conducted in adherence to the Declaration of Helsinki.

CKD5-ND patients

The causes of renal disease in CKD5-ND patients ($n = 53$) were chronic glomerulonephritis ($n = 27$), renovascular disease or hypertension ($n = 2$), diabetic nephropathy ($n = 1$), other causes or unknown etiology ($n = 23$).

PD patients

Prevalent PD patients ($n = 43$) had been treated with bio-compatible fluids: glucose-based, amino acid-based, or, for the long dwell, icodextrin-based solutions. Their median dialysis vintage time was 11.3 months. The causes of CKD were as follows: chronic glomerulonephritis ($n = 14$), renovascular disease or hypertension ($n = 1$), diabetic nephropathy ($n = 6$), other causes or unknown etiology ($n = 22$).

HD patients

Prevalent HD patients ($n = 53$) with median dialysis vintage time of 12.8 months were treated by conventional maintenance HD or other dialytic techniques. The causes of CKD were as follows: chronic glomerulonephritis ($n = 15$), renovascular disease or hypertension ($n = 5$), diabetic nephropathy ($n = 3$), and others or unknown etiology ($n = 30$).

Biochemical measurements

Biochemical measurements of plasma high-sensitivity C-reactive protein (hsCRP), albumin, creatinine, troponin, cholesterol, triglycerides, HDL-cholesterol, calcium, phosphate, alkaline phosphatase (ALP), parathyroid hormone (PTH), fibroblast growth factor 23 (FGF-23), Klotho, 25 (OH) vitamin D, were performed at the Clinical Chemical Laboratory of Karolinska University Hospital, Stockholm, Sweden. Human sclerostin was analyzed with ELISA kit from R&D systems (Abingdon, UK). LDL was calculated using the Friedewald formula: [(total cholesterol) - (high-

Table 1 Characteristics of CKD 5 patients according to tertiles of copeptin

	Low (n = 49)	Middle (n = 49)	High (n = 51)	P value
General characteristics				
Copeptin (pg/mL)	290 (216–328)	380 (344–438)	520 (455–677)	0.001
Age (years)	45 (24–62)	46 (24–65)	51 (29–67)	0.030
Males, n (%)	32 (65)	33 (67)	36 (71)	0.840
Diabetes mellitus, n (%)	4 (8)	5 (10)	7 (13)	0.663
Cardiovascular disease, n (%)	3 (6)	8 (16)	12 (23)	0.041
Previously on dialysis, n (%)	26 (53)	28 (57)	42 (82)	0.015
Dialysis vintage, years	0.2 (0–3.4)	0.3 (0–3.11)	1.0 (0–3.1)	0.005
Systolic BP, (mmHg)	133 (116–156)	146 (125–170)	144 (115–180)	0.008
Diastolic BP, (mmHg)	80 (67–96)	84 (72–95)	82 (67–100)	0.542
Nutritional status				
Body mass index, (kg/m ²)	24.4 (21–29.7)	24.5 (20.5–29.9)	25.0 (20.9–29.8)	0.824
Lean body mass index, (kg/m ²) ^a	18.3 (15.3–20.3)	18.6 (14.1–22.1)	18.2 (14.8–21)	0.888
Fat body mass index, (kg/m ²) ^a	5.9 (3.4–10.1)	6.6 (3.6–10.7)	6.1 (3.1–10.1)	0.464
Markers of metabolism and nutrition				
Hemoglobin, (g/L) ^b	110 (97–129)	112 (97–130)	114 (96–131)	0.724
Albumin, (g/L)	35.0 (31.0–40.0)	35.0 (30.0–40.0)	34 (27.4–39.8)	0.388
Glucose, (mmol/L) ^c	5.4 (4.3–9.2)	5.4 (4.4–7)	5.8 (4.5–8.2)	0.286
HbA1c, (%) ^d	33.0 (19.0–40.0)	33.5 (25.5–40.5)	33.0 (23.9–40.4)	0.666
Triglyceride, (mmol/L)	1.2 (0.6–2.3)	1.3 (0.6–2.3)	1.4 (0.7–2.6)	0.072
Total cholesterol, (mmol/L)	4.5 (3.2–5.9)	4.4 (3.2–6.2)	4.2 (3.0–6.3)	0.661
HDL cholesterol, (mmol/L)	1.4 (1.0–2.0)	1.4 (0.8–2.2)	1.3 (0.8–2.0)	0.408
LDL cholesterol, (mmol/L)	2.7 (1.6–4.4)	2.6 (1.4–4.5)	2.6 (1.4–4.6)	0.916
Plasma osmolality (mmol/kg)	300 (290–315)	306 (288–319)	302 (290–314)	0.241
Creatinine (μmol/L)	661 (484–1086)	683 (451–1021)	829 (560–1136)	0.006
Biomarkers of inflammation				
hsCRP, (mg/L)	0.8 (0.2–9.0)	0.8 (0.2–3.9)	1.0 (0.2–7.0)	0.883
IL-6, (pg/mL) ^e	1.0 (0.1–6.0)	1.4 (0.1–5.7)	1.4 (0–6.5)	0.820
TNF (pg/mL) ^f	9.0 (7.2–15.2)	10.8 (8.3–15.2)	10.5 (7.6–21)	0.094
Medications				
β-blockers, n (%)	14 (27)	31 (63)	41 (80)	< 0.0001
Ca-blocker, n (%)	24 (45)	26 (53)	27 (53)	0.899
ACEi/ARB, n (%)	32 (65)	32 (65)	25 (49)	0.157
Statins, n (%)	15 (31)	16 (33)	21 (41)	0.499
Calcium-phosphate binders, n (%)	24 (49)	28 (57)	26 (51)	0.700
Biomarkers of mineral-bone disease and vascular calcification				
Calcium, (mmol/L)	2.3 (2.1–2.6)	2.3 (2.0–2.5)	2.3 (2.0–2.5)	0.814
Phosphate, (mmol/L)	1.7 (1.1–2.1)	1.7 (1.0–2.5)	1.6 (1.0–2.4)	0.964
ALP, (U/L) ^f	57 (33–109)	60 (38–155)	67 (37–118)	0.505
PTH, (pg/mL)	231 (94–623)	255 (75–594)	269 (54–520)	0.903
FGF-23, (pg/mL) ^g	3534 (223–27,943)	2820 (706–38,863)	7486 (1088–83,186)	0.257
Klotho (pg/mL) ^h	317 (178–603)	380 (197–970)	330 (119–513)	0.220
25 (OH) vitamin D	38 (16–79.8)	35 (20–73)	33.5 (12–65.7)	0.309
Sclerostin (pg/mL) ⁱ	369 (198–939)	409 (247–682)	515 (271–894)	0.067

Table 1 Characteristics of CKD 5 patients according to tertiles of copeptin (Continued)

	Low (n = 49)	Middle (n = 49)	High (n = 51)	P value
Troponin T (µg/L)	17.0 (5.0–53.6)	19.5 (3.6–71.6)	32.0 (1.2–68.0)	0.036
Total BMD (g/cm ²) ^f	1.2 (1.0–1.3)	1.1 (0.9–1.3)	1.1 (0.8–1.3)	0.100
CAC score (AU) ^j	0 (0–700)	2 (0–1546)	38 (0–1946)	0.055
Medial calcification, n (%) ^k				0.030
0–1	34 (43)	23 (29)	22 (28)	
2–3	13 (22)	20 (35)	25 (43)	

Continuous variables are presented as median (10–90 percentile). Categorical variables are presented as number (n)/percentage (%). Abbreviations: *Systolic BP* Systolic blood pressure, *Diastolic BP* Diastolic blood pressure, *HDL* High-density lipoprotein, *LDL* Low-density lipoprotein, *hsCRP* High-sensitivity C-reactive protein, *IL-6* Interleukin-6, *TNF* Tumor necrosis factor, *ACEi* Angiotensin-converting enzyme, *ARB* Angiotensin 2 receptor blocker, *ALP* Alkaline phosphatase, *PTH* Parathyroid hormone, *FGF-23* Fibroblast growth factor – 23, *Total BMD* Total bone mineral density, *CAC score (AU)* Calcification score (Agatston units)

Measurements were available in following numbers of patients:

^a n = 123, ^b n = 120, ^c n = 111, ^d n = 129, ^e n = 90, ^f n = 77, ^g n = 65, ^h n = 109, ⁱ n = 82, ^j n = 115, ^k n = 137

Every entry written in boldface in the aforementioned tables is of statistical significance ($p < 0,05$)

density lipoprotein cholesterol) – (triglycerides/5)]. Tumor necrosis factor (TNF), interleukin-6 (IL-6) were analyzed by immunometric assays on an Immulite 1000 Analyzer (Siemens Healthcare Diagnostics, Los Angeles, CA, USA) using commercial kits. Plasma osmolality was measured using VAPRO Vapor Pressure Osmometer 5520 (Wescor, USA).

Blood samples for copeptin measurement were taken in patients following overnight fasting, in hemodialyzed patients samples were taken the day after HD session. Copeptin concentration was measured with a commercial enzyme immunoassay (Cloud-Clone Corp., Houston, USA) according to the manufacturer's protocol. Briefly, samples were incubated at 37 °C with respective reagents. Optical density was read at 450 nm immediately. The minimum detectable dose of copeptin is typically < 6.1 pg/mL. The intra-assay coefficient variation (CV) was <10% and the inter-assay CV was <12%.

Nutritional assessments

Body mass index (BMI) was calculated as weight in kilograms divided by the square of height in meters. Lean body mass (LBM) and fat body mass (FBM) were calculated by anthropometry based on measurements of the thickness of biceps, triceps, subscapular and supra-iliac skinfold as described previously [20], using equations by Siri [21]. LBM index and FBM index were calculated according to Kyle et al. [22]. Bone mineral density (BMD) was determined by dual-energy X-ray absorptiometry (DXA).

CAC score

Cardiac CT scans were performed using a 64-channel detector scanner (Lightspeed VCT; General Electric (GE) Healthcare, Milwaukee, WI). CAC scores were expressed in Agatston units, the protocol and measurements as described previously in detail [13]. Total CAC score was calculated as the sum of CAC scores in the

left main artery, the left anterior descending artery, the left circumflex artery, and the right coronary artery.

Vascular scoring by histology

Inferior epigastric arteries were collected from patients within 20 min from the start of kidney transplantation procedure. After preparation, the sections were then stained with hematoxylin and eosin and von Kossa staining before evaluation by one experienced pathologist. The degree of medial calcification was quantified semi-automatically according to method described previously [13] and graded 0 to 3, where 0 indicated no calcification and 3 the highest degree of calcification. Patients graded as 0 and 1 represented no-minimal vascular calcification, and those graded 2 and 3 represented moderate-extensive vascular calcification.

Statistical analyses

Continuous data are expressed as median (10th to 90th percentile) and nominal data as percentage. *P* value was set at $p < 0.05$. For comparisons between three groups non-parametric Kruskal-Wallis ANOVA-test was used for continuous variables and Chi-square test was used for nominal variables. Associations between variables were determined using non-parametric Spearman rank correlation analysis. Multivariate linear regression analyses of copeptin were used and results were shown as standardized β regression coefficients. We performed multinomial logistic regression analysis to examine factors associated for determinants of vascular calcification 0 and 1 score versus 2 and 3. Statistical analyses were performed using statistical software SAS version 9.4 (SAS Campus Drive, Cary, NC, USA) and Stata 16 (Stata Corporation, College Station, TX, USA).

Results

Demographics and clinical characteristics of the examined patients according to copeptin tertiles are shown in Table 1. Patients with higher copeptin were older, had

higher systolic blood pressure and were more frequently diagnosed with CVD. In addition, higher percentage of these patients had been undergoing dialysis with longer vintage. Characteristics of the studied CKD5 patients according to dialysis dependence are presented in Additional file 1: Table S1. There was no difference in copeptin concentration between PD and HD patients (427 vs. 412 pg/mL, $p = 1.0$), while plasma copeptin was significantly lower in CKD5-ND patients compared to PD and HD patients (351 vs. 427 pg/mL, $p = 0.02$; and 351 vs. 412 pg/mL, $p = 0.001$, respectively). Plasma osmolality and copeptin correlated in CKD5-ND patients ($Rho = 0.28$; $p = 0.04$), whereas in the two groups of dialyzed patients this association was not observed. In Spearman's rank correlations (Rho), copeptin concentrations were significantly associated with age ($Rho = 0.21$; $p = 0.011$), presence of CVD ($Rho = 0.20$; $p = 0.013$), systolic blood pressure ($Rho = 0.20$; $p = 0.01$), triglycerides ($Rho = 0.22$; $p = 0.007$), serum creatinine ($Rho = 0.26$; $p = 0.001$), TNF ($Rho = 0.27$; $p = 0.016$), sclerostin ($Rho = 0.22$; $p = 0.049$), troponin T ($Rho = 0.27$; $p = 0.001$), CAC score ($Rho = 0.27$; $p = 0.003$) and histological scoring of medial calcification ($Rho = 0.21$; $p = 0.016$). Copeptin did not have significant association with gender and diabetes mellitus.

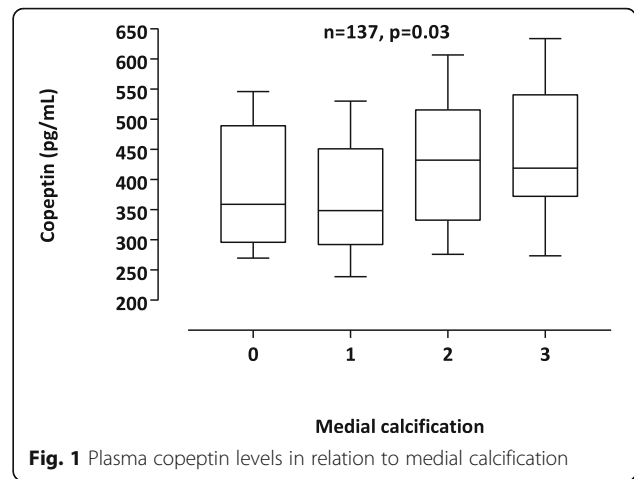
When CAC scores were categorized as CAC = 0, CAC \geq 100 and CAC \geq 1000, we found no statistically significant differences in copeptin concentration between the group of CAC = 0 and CAC \geq 100 (372.9 [range 259.4–529.8] vs 426.8 [range 242.3–651.8], $p = 0.76$) but there was statistically significant difference between the group of CAC = 0 and CAC \geq 1000 (372.9 [range 259.4–529.8] vs 453.9 [range 333.4–681.1], $p = 0.001$).

A multivariate linear regression model for determinants for plasma copeptin showed that 1-SD increase of age, 1-SD increase of serum creatinine and 1-SD increase of triglycerides were associated with higher plasma copeptin levels (Table 2). Patients with histological signs of moderate-extensive VC had significantly higher copeptin levels (Fig. 1).

Table 2 Multivariate linear regression for the prediction of copeptin, pg/ml ($n = 149$), expressed as standardized β -coefficients with other variables

Parameters	Copeptin (adj $r^2 = 0.14$) standardized β (p value)
1-SD increase of age, years	0.25 (0.002)
Gender (male, female)	-0.08 (0.31)
1-SD increase of serum creatinine ($\mu\text{mol/l}$)	0.26 (0.003)
1-SD increase of triglyceride (mmol/L)	0.16 (0.03)
Systolic blood pressure (mmHg)	0.14 (0.07)

Every entry written in boldface in the aforementioned tables is of statistical significance ($p < 0.05$)



Univariate analysis showed no significant correlations between biomarkers of mineral-bone disease and VC; however, a positive correlation between hsCRP and VC was found ($Rho = 0.18$, $p = 0.03$). Receiver operating characteristic (ROC) curves for prediction of VC showed that the area under the curve (AUC) was for copeptin – AUC 0.64 ($p = 0.02$) and for hsCRP - AUC 0.54 ($p = 0.02$). Multivariate logistic regression analysis showed that 1-SD increase of age, male gender, presence of diabetes and 1-SD increase of copeptin were significantly associated with the presence of moderate-extensive VC (Table 3).

Discussion

We report that in CKD5 patients, high plasma copeptin levels are associated with age, CVD, dialysis vintage, systolic blood pressure and serum creatinine. The chief finding of the study was that elevated copeptin levels were associated with biopsy-verified media calcification. Multivariate analysis showed that copeptin was related to extent of VC independently of age, male gender and the presence of diabetes.

Vascular calcification, viewed in the past as a passive process, is now recognized as an active phenomenon [23].

Table 3 Multivariate logistic regression model for determinants of VC 0 and 1 score versus 2 and 3 ($n = 137$)

Parameters	VC (pseudo $r^2 = 0.29$) Odds Ratio 95%CI (p value)
1-SD increase of age, years	2.5 (1.5–4.1) (0.001)
Gender (male, female)	4.4 (1.6–11.1) (0.003)
Diabetes (No, Yes)	23.2 (2.5–210.5) (0.005)
CKD5-ND vs HD	0.7 (0.4–1.8) (0.42)
CKD5-ND vs PD	0.5 (0.4–1.8) (0.42)
1-SD increase of hsCRP (mg/L)	0.7 (0.4–1.3) (0.254)
1-SD increase of Copeptin, (pg/ml)	1.6 (1.1–2.6) (0.043)

Every entry written in boldface in the aforementioned tables is of statistical significance ($p < 0.05$)

The mechanisms underlying increased VC in CKD are not fully explained, but they involve disorders in calcium and phosphorus metabolism, and disturbed homeostasis in pro- and anti-calcification factors. Recently, novel tests, such as T50 functional test, have been developed to help in the determination of calcification propensity in CKD5 patients [24]. It has also been shown that uremia induces the differentiation of vascular smooth muscle cells (VSMCs) – the most important component of the media of arteries – into osteoblast-like cells due to up-regulation of transcription factors, such as Runt-related transcription factor 2 (Runx2) and Msh homebox 2 (Msx2) and increased alkaline phosphatase activity [25]. These changes contribute to the calcification of VSMC, in a way similar to bone formation (i.e. ossification).

To the best of our knowledge, this is the first study to show a link between plasma copeptin level and the degree of VC in CKD. Emerging research suggest that vasopressin plays important role in the progression of

CKD and hypertension via stimulation of the renin-angiotensin aldosterone system (RAAS) leading to vasoconstriction and higher systemic and glomerular blood pressure [18]. Direct effects on VSMCs also result in vasoconstriction [26]. By modulating both the number and size of VSMC, AVP may play a direct role in the development of chronic vascular disease. It has been reported that AVP activates intracellular Ca^{2+} and protein kinase C (PKC) via the activation of phospholipase (PL) C and D leading to augmentation of phosphate transport during proliferation of VSMC [27, 28]. Among other actions, AVP also stimulates secretion of endothelin-1 (ET-1) from endothelial cells which enhances endothelial dysfunction and coagulation disorders as well as increases cellular sodium-dependent phosphate transport via Pit1 and Pit2 [29, 30]. This suggests, that in the uremic hyperphosphatemic milieu, there is intensified entry of phosphate into VSMC. Furthermore, an increase in cellular phosphate can increase cellular calcification

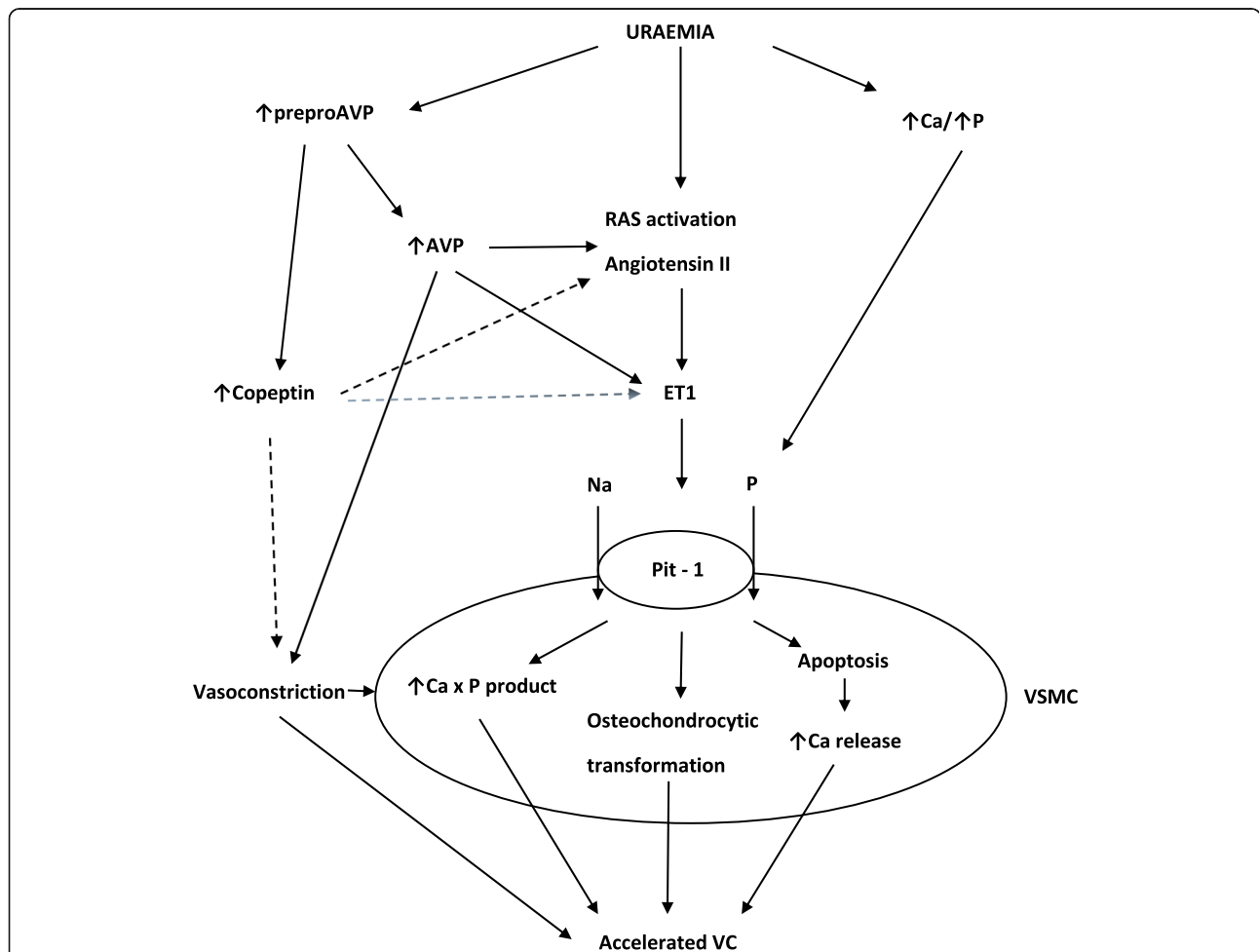


Fig. 2 Mechanisms of vascular calcification in CKD. In the setting of uraemic milieu, activation of renin-angiotensin and vasopressin systems, upregulation of sodium-dependent phosphate transporter Pit-1 promotes osteochondrocytic transformation and apoptosis of vascular smooth muscle cell (VSMC) and, in consequence, accelerated vascular calcification. Dashed lines show possible copeptin links with the process

by different mechanisms: an increase in calcium x phosphate product, change of VSMC to a bone-producing cell phenotype and cell apoptosis that associates with increased secretion of pro-calcific factors [31]. A schematic presentation of mechanisms leading to VC including potential links with copeptin is shown in Fig. 2.

Our study showed positive correlation between plasma osmolality and copeptin in the group of non-dialyzed CKD5 patients, whereas such relationship was not observed in PD and HD groups, and non-dialyzed patients had also lower plasma copeptin levels than the other two groups. This accords with Ettema et al. [32] who examined copeptin levels in patients with different stages of CKD, including CKD5. They observed positive correlation between plasma osmolality and copeptin in patients with CKD and higher residual renal function (RRF) associated with lower plasma copeptin levels in HD patients which underscore the importance of RRF in the clearance of copeptin. Finally, they observed that both vasopressin and copeptin were removed during HD (with higher dialyzer clearance rate of vasopressin). We recently [33] reported that in patients undergoing PD, dialysate copeptin was positively correlated with plasma copeptin, indicating that also peritoneal clearance of copeptin may contribute to explain why there was no association between plasma copeptin and osmolality among the dialyzed patients in the current study.

A noteworthy finding of the study is the strong correlation of plasma copeptin with the use of β -blockers. To the best of our knowledge, such relationship has not been described before. Since the mechanism (s) of this correlation remain unclear, further studies are needed to clarify if this is merely a reflection of confounding by indication or if β -blockers do affect copeptin.

The results of the present study should be considered given some important limitations. First, we examined CKD5 patients with different types of treatment; i.e. conservative, HD and PD. Moreover, since the group in which vascular biopsies were available was selected for LD-Rtx and thus represent a selected group of “healthier” CKD5 patients. Thus, since diabetic nephropathy was underrepresented compared to the typical CKD5 population the association between VC and copeptin may have been underestimated. Third, as in any observational study, cause-effect relations cannot be determined. Finally, although the circulating concentration of copeptin directly reflects that of AVP and copeptin shows the same response to osmotic changes as AVP in CKD, copeptin is reported to increase more than

vasopressin suggesting that the clearance rate of copeptin is more markedly reduced than for vasopressin when GFR decreases. Thus, while copeptin reflects vasopressin levels, in CKD stages 4 and 5, a correction for renal function might be required [14, 32].

Conclusions

High circulating levels of copeptin in CKD5 were found to associate with total CAC score (by cardiac CT), and with the degree of medial vascular calcification (by histology of arterial biopsies) even after adjusting for confounders. Further studies are needed to resolve if copeptin is simply a marker or a player in the complex uremic vascular calcification process.

Supplementary information

Supplementary information accompanies this paper at <https://doi.org/10.1186/s12882-020-1710-6>.

Additional file 1: Table S1. Characteristics of CKD 5 patients stratified according to dialysis-dependence.

Abbreviations

AVP: Arginine vasopressin; CAC: Coronary artery calcification; CKD: Chronic kidney disease; CVD: Cardiovascular disease; ET-1: Endothelin 1; HD: Hemodialysis; LD-Rtx: Living donor renal transplantation; PD: Peritoneal dialysis; VC: Vascular calcification; VSMC: Vascular smooth muscle cell

Acknowledgements

We thank all patients who participated in the study and those who carried out the extensive clinical and laboratory work in the clinical investigational unit and the renal laboratory at Dept. of Renal Medicine, Karolinska University Hospital specially Ann-Christin Bragfors Helin.

Authors' contributions

Research idea and study design: EG, RJ. Data acquisition: ARQ, OH, PB, PS. Data analysis: EG, ARQ, LD, BL, PS. Statistical analysis: ARQ. Drafting the article: EG. Supervision of manuscript: PS. Revision process: ARQ, LD, BL, OH, MS, TB, JR, PB, RJ, PS. Specific contribution to scoring of arterial biopsies: MS. Specific contribution to analysis of CT heart radiographies: TB, JR. All authors have read and approved the final version of the manuscript.

Funding

This study was supported by a grant from Baxter Healthcare to Baxter Novum, Department of Clinical Science, Intervention and Technology, Karolinska Institutet. The study also benefited from generous support from Karolinska Institutet Diabetes Theme Center (PS), Heart and Lung Foundation (PS), Njurfonden (PS), and Westmans Foundation (PS). This study also received funding from the European Union's Horizon2020 research and innovation program under the Marie Skłodowska-Curie grant agreement No 722609. The funders of this study had no role in collection, data analysis and/or interpretation of data in this study.

Availability of data and materials

The datasets used and analysed during the current study are available from the corresponding author on reasonable request.

Ethics approval and consent to participate

The study was performed in accordance with the principles of the Declaration of Helsinki and was approved by the Ethics Committee of the Karolinska Institutet (EPN). Written informed consent was obtained from each patient.

Consent for publication

Not applicable

Competing interests

Baxter Novum is the result of a grant from Baxter Healthcare to Karolinska Institutet. Bengt Lindholm is employed by Baxter Healthcare Corporation. The other authors declare no conflict of interest.

Author details

¹Division of Renal Medicine and Baxter Novum, Department of Clinical Science, Intervention and Technology, Karolinska Institutet, Campus Flemingsberg, Stockholm, Sweden. ²Department of Nephrology, Transplantology and Internal Medicine, Pomeranian Medical University, Al. Powstancow Wlkp. 72, 70-111 Szczecin, Poland. ³Cardiovascular, Renal and Metabolism Safety, Clinical Pharmacology & Safety Sciences R&D, AstraZeneca, Gothenburg, Sweden. ⁴Division of Medical Imaging and Technology, Department of Clinical Science, Intervention and Technology, Karolinska Institutet, Campus Flemingsberg, Stockholm, Sweden. ⁵Division of Renal Diseases and Hypertension, School of Medicine, University of Colorado, Denver, CO, USA.

Received: 17 August 2019 Accepted: 30 January 2020

Published online: 07 February 2020

References

- Quinn MP, Cardwell CR, Kee F, Maxwell AP, Savage G, McCarron P, et al. The finding of reduced estimated glomerular filtration rate is associated with increased mortality in a large UK population. *Nephrol Dial Transplant*. 2011; 26(3):875–80.
- Dai L, Golembiewska E, Lindholm B, Stenvinkel P. End-stage renal disease, Inflammation and Cardiovascular Outcomes. *Contrib Nephrol*. 2017;191:32–43.
- Stenvinkel P. Chronic kidney disease: a public health priority and harbinger of premature cardiovascular disease. *J Intern Med*. 2010;268(5):456–67.
- Stenvinkel P, Pecoits-Filho R, Lindholm B. Coronary artery disease in end-stage renal disease: no longer a simple plumbing problem. *J Am Soc Nephrol*. 2003;14(7):1927–39.
- Sigrist M, Bungay P, Taal MW, McIntyre CW. Vascular calcification and cardiovascular function in chronic kidney disease. *Nephrol Dial Transplant*. 2006;21(3):707–14.
- Civilibal M, Caliskan S, Adaletli I, Ofiaz H, Sever L, Candan C, et al. Coronary artery calcifications in children with end-stage renal disease. *Pediatr Nephrol*. 2006;21(10):1426–33.
- London GM, Guérin AP, Verbeke FH, Pannier B, Boutouyrie P, Marchais SJ, et al. Mineral metabolism and arterial functions in end-stage renal disease: potential role of 25-hydroxyvitamin D deficiency. *J Am Soc Nephrol*. 2007; 18(2):613–20.
- Han D, Lee JH, Hartzog B, Min JK. Role of computed tomography screening for detection of coronary artery disease. *Clin Imaging*. 2016;40(2):307–10.
- Takayama Y, Yasuda Y, Suzuki S, Shibata Y, Tatami Y, Shibata K, et al. Relationship between abdominal aortic and coronary artery calcification as detected by computed tomography in chronic kidney disease patients. *Heart Vessel*. 2016;31(7):1030–7.
- Ketteler M, Block GA, Evenepoel P, et al. Executive summary of the 2017 KDIGO Chronic Kidney Disease-Mineral and Bone Disorder (CKD-MBD) Guideline Update: what's changed and why it matters. *Kidney Int*. 2017;92: 26–36 *Kidney Int*. 2017;92(6):1558.
- Alderson HV, Ritchie JP, Green D, Chiu D, Kalra PA. Potential for biomarkers of chronic kidney disease-mineral bone disorder to improve patient care. *Nephron Clin Pract*. 2013;124(3–4):141–50.
- Nascimento MM, Hayashi SY, Riella MC, Lindholm B. Elevated levels of plasma osteoprotegerin are associated with all-cause mortality risk and atherosclerosis in patients with stages 3 to 5 chronic kidney disease. *Braz J Med Biol Res*. 2014;47(11):995–1002.
- Qureshi AR, Olason H, Witasp A, Haarhaus M, Brandenburg V, Wernerson A, et al. Increased circulating sclerostin levels in end-stage renal disease predict biopsy-verified vascular medial calcification and coronary artery calcification. *Kidney Int*. 2015;88(6):1356–64.
- Golembiewska E, Machowska A, Stenvinkel P, Lindholm B. Prognostic value of Copeptin in chronic kidney disease: from general population to end-stage renal disease. *Curr Protein Pept Sci*. 2017;18(12):1232–43.
- Christ-Crain M, Fenske W. Copeptin in the diagnosis of vasopressin-dependent disorders of fluid homeostasis. *Nat Rev Endocrinol*. 2016;12(3): 168–76.
- Velho G, Bouby N, Hadjadj S, Matallah N, Mohammedi K, Fumeron F, et al. Plasma Copeptin and renal outcomes in patients with type 2 diabetes and albuminuria. *Diabetes Care*. 2013;36(11):3639.
- Ponte B, Pruijm M, Ackermann D, Vuistiner P, Guessous I, Ehret G, et al. Copeptin is associated with kidney length, renal function, and prevalence of simple cysts in a population-based study. *J Am Soc Nephrol*. 2015;26(6): 1415–25.
- Afsar B. Pathophysiology of copeptin in kidney disease and hypertension. *Clin Hypertens*. 2017;23:13.
- Bjornstad P, Maahs DM, Jensen T, Lanaspas MA, Johnson RJ, Rewers M, et al. Elevated copeptin is associated with atherosclerosis and diabetic kidney disease in adults with type 1 diabetes. *J Diabetes Complicat*. 2016;30(6): 1093–6.
- Durnin JV, Womersley J. Body fat assessed from total body density and its estimation from skinfold thickness: measurements on 481 men and women aged from 16 to 72 years. *Br J Nutr*. 1974;32(1):77–97.
- Siri WE. Body composition from fluid spaces and density: analysis of methods. 1961. *Nutrition*. 1993;9(5):480–91 discussion , 92.
- Kyle UG, Schutz Y, Dupertuis YM, Pichard C. Body composition interpretation. Contributions of the fat-free mass index and the body fat mass index. *Nutrition*. 2003;19(7–8):597–604.
- Nitta K. Vascular calcification in patients with chronic kidney disease. *Ther Apher Dial*. 2011;15(6):513–21.
- Pasch A, Block GA, Bachtler M, Smith ER, Jahnhen-Dechent W, Arampatzis S, et al. Blood calcification propensity, cardiovascular events, and survival in patients receiving hemodialysis in the EVOLVE trial. *Clin J Am Soc Nephrol*. 2017;12(2):315–22.
- Shroff RC, McNair R, Figg N, Skepper JN, Schurgers L, Gupta A, et al. Dialysis accelerates medial vascular calcification in part by triggering smooth muscle cell apoptosis. *Circulation*. 2008;118(17):1748–57.
- Campbell-Boswell M, Robertson AL. Effects of angiotensin II and vasopressin on human smooth muscle cells in vitro. *Exp Mol Pathol*. 1981;35(2):265–76.
- Nishiwaki-Yasuda K, Suzuki A, Kakita A, Sekiguchi S, Asano S, Nishii K, et al. Vasopressin stimulates Na-dependent phosphate transport and calcification in rat aortic smooth muscle cells. *Endocr J*. 2007;54(1):103–12.
- Nemenoff RA. Vasopressin signaling pathways in vascular smooth muscle. *Front Biosci*. 1998;3:d194–207.
- Spatz M, Stanimirovic D, Bacic F, Uematsu S, McCarron RM. Vasoconstrictive peptides induce endothelin-1 and prostanoids in human cerebrovascular endothelium. *Am J Phys*. 1994;266(3 Pt 1):C654–60.
- Masukawa H, Miura Y, Sato I, Oiso Y, Suzuki A. Stimulatory effect of endothelin-1 on Na-dependent phosphate transport and its signaling mechanism in osteoblast-like cells. *J Cell Biochem*. 2001;83(1):47–55.
- Rabkin SW. Endothelin but not angiotensin II may mediate hypertension-induced coronary vascular calcification in chronic kidney disease. *Int J Nephrol*. 2011;2011:516237.
- Ettema EM, Heida J, Casteleijn NF, Boesten L, Westerhuis R, Gaillard CAJM, et al. The effect of renal function and hemodialysis treatment on plasma vasopressin and Copeptin levels. *Kidney Int Rep*. 2017;2(3):410–9.
- Fijałkowski M, Safranow K, Lindholm B, Ciechanowski K, Muraszko AM, Dołęgowska B, et al. Dialysate copeptin and peritoneal transport in incident peritoneal dialysis patients. *Int Urol Nephrol*. 2019;51(9):1667–73.

Publisher's Note

Springer Nature remains neutral with regard to jurisdictional claims in published maps and institutional affiliations.